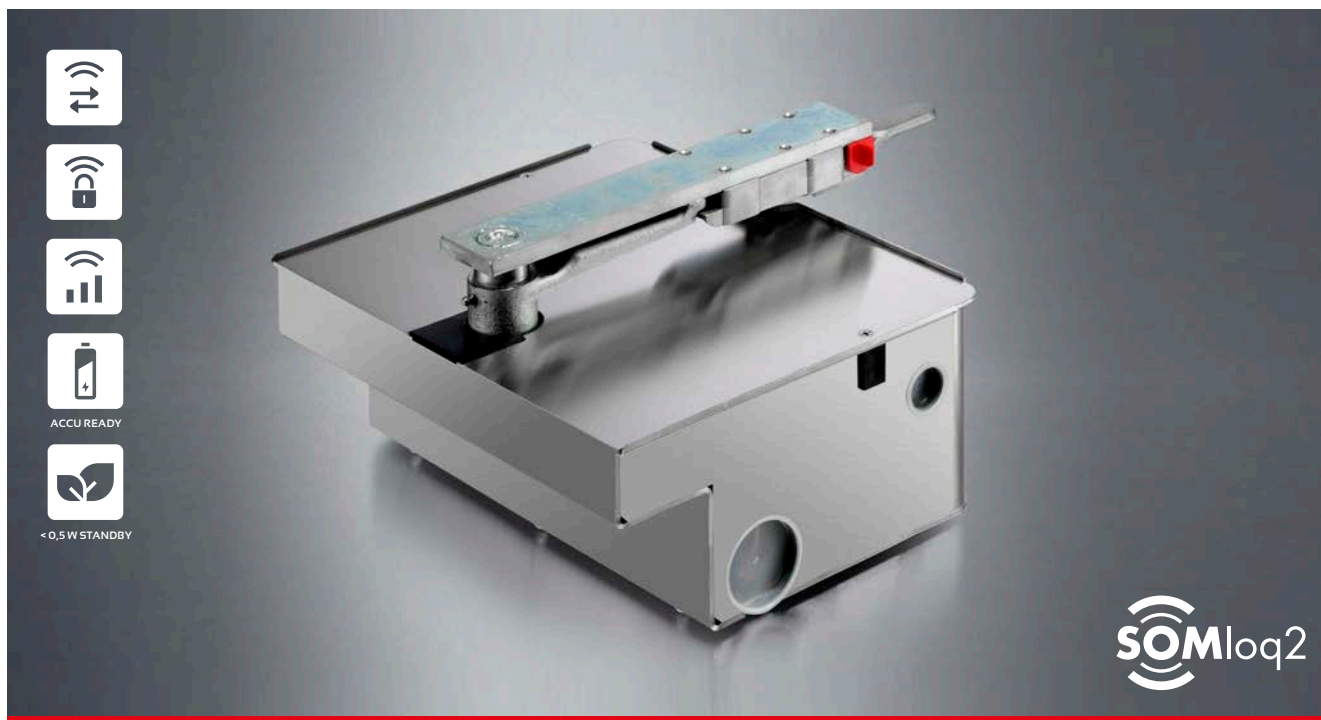


For swing gates with a gate wing width of up to 3,5 m and a gate wing weight of 350 kg<sup>1)</sup>



## Advantages

- Bi-directional SOMloq2 radio system
- Single- and dual-wing operation
- Ideal for swing gates in which the operator should not be visible
- Certified restriction of closing forces acc. to EN 12453 by electronic motor monitoring
- Close sequence regulation (active/inactive wing) electronically monitored
- Automatic closing function (semi-/fully-automatic, shortening after drive-through)
- Programming of end positions and operating forces with few reference drives
- High-quality DC gear motor with hall sensor
- Power saving (standby < 0,5 Watt)
- Mechanical emergency release, lockable
- Can be unlocked in any position
- Weather-proof device housing
- Safety connections for example for safety contract strip, photo eye, electrical gate lock, warning light 24 V
- Connection option for battery pack provides buffer in the event of a power failure
- Accessories for extension, e.g. Memo (memory to 450 hand-held transmitter commands)

**1-leaf DIN left**  
stainless steel # S10603-00001  
hot-dip galvanised # S10904-00001

**1-leaf DIN right**  
stainless steel # S10604-00001  
hot-dip galvanised # S10905-00001

**2-leaf**  
stainless steel # S10605-00001  
hot-dip galvanised # S10906-00001

## TECHNICAL DATA

Temperature range	-25 °C to +65 °C
Nominal voltage	AC 220–240 V
Nominal frequency	50/60 Hz
Max. torque	320 Nm
Max. opening angle	105°
Permissible duty cycle S3	40%
IP code	operator IP 67 control IP 65

With intelligent control technology SOMlink for dealers, there are additional options for easily adjusting features and parameters with a web app using your smartphone or tablet. (# 7040V000)



<sup>1)</sup> Starting at 3 m leaf length and 300 kg gate weight, the use of active safety edges is required.

Last updated: 09/2021. Literal errors, errors and technical changes excepted.